

FROM IMAGES TO ANSWERS®

# Image-Pro® Family Software

## Providing the Total Image Analysis Solution

### From Images to Answers

Imaging needs are rapidly growing and changing. One software user may need an entry-level image capture and enhancement solution, while another may need a more robust package that offers customizable macros and application-specific plug-in modules.

This is why Media Cybernetics has developed the Image-Pro Family software series. Based on the Image-Pro platform already used daily by thousands of researchers and engineers, the Image-Pro Family offers three unique Image-Pro packages to accommodate a variety of imaging needs.

### The Image-Pro Family

**Image-Pro® EXPRESS** ■ **Image-Pro® Express**  
Perfect for basic imaging or for image capture stations, Image-Pro Express offers numerous capture and enhancement options.

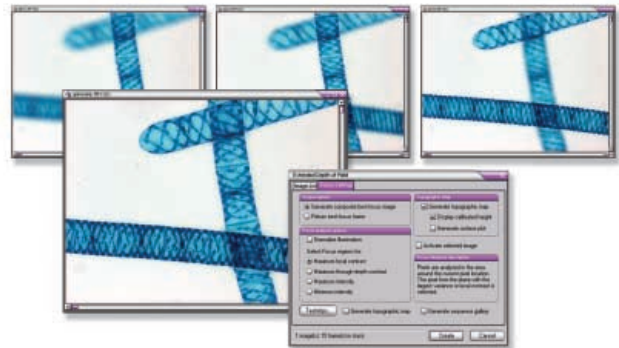
**Image-Pro® DISCOVERY** ■ **Image-Pro® Discovery**  
More advanced than Image-Pro Express, Image-Pro Discovery includes added measurement and analysis capabilities. When combined with the 3D Constructor Plug-in Module, Image-Pro Discovery is an ideal platform for quantitative 3D measurements.

**Image-Pro® PLUS** ■ **Image-Pro® Plus**  
The ultimate imaging software package, Image-Pro Plus includes all of the functionality of Image-Pro Discovery along with added analysis tools and the ability to write customized macros and plug-ins.

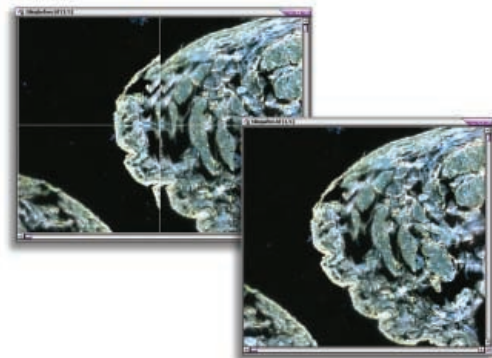
Check out the Image-Pro Family Features comparison chart on the opposite side of this handout to see which Image-Pro package fits your needs.

### Upgrade as Your Needs Grow

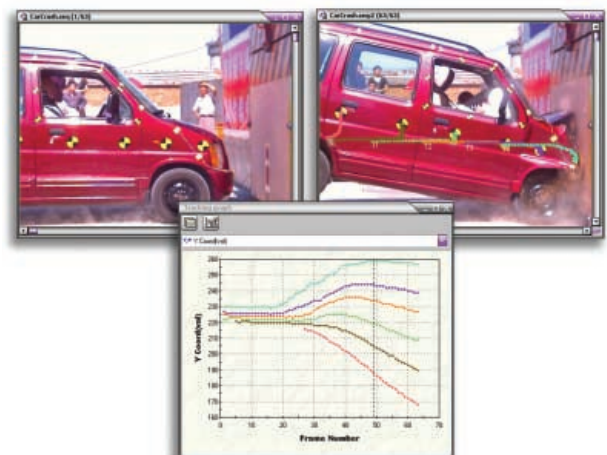
As you become more skilled with your software, you may find that you need more imaging capabilities. We provide an easy upgrade path to your Image-Pro product of choice.



**Extended Depth of Field (EDF)** allows you to create an in-focus composite image from a series of partially in-focus images. Available in all Image-Pro products.



**Stitching and Tiling** lets you build a large image from multiple, smaller location images. Available in Image-Pro Discovery and Image-Pro Plus.



**Object tracking** enables you to follow objects in image sequences as they move through time and space. Available only in Image-Pro Plus.

# FROM IMAGES TO ANSWERS®

## Partial List of Image-Pro Family Features

For more information on specific features, contact a dealer in your area.

Image-Pro  
Express v5.0

Image-Pro  
Discovery v5.0

Image-Pro  
Plus v5.0

	Image-Pro Express v5.0	Image-Pro Discovery v5.0	Image-Pro Plus v5.0
<b>Acquire</b>			
Acquire, create, and play back a sequence (stack) of images	X	X	X
Live image preview with measurements	X	X	X
AutoSet feature takes guesswork out of setting color balance exposure parameters	X	X	X
<b>Composite Imaging</b>			
Image stitching and tiling tools		X	X
Alignment correction to align individual or sequence images for translation, rotation, or scaling		X	X
Extended Depth of Field (EDF) tools	X	X	X
EDF Test Strips to test all EDF options with a single click			X
Local Zoom tool to simultaneously view entire image and magnified area of interest	X	X	X
Color Composite tool		X	X
<b>Process</b>			
Extended Depth of Field (EDF) tools	X	X	X
Dye manager to apply dye tints to gray scale images by choosing emission wavelength	X	X	X
Enhancement filters	X	X	X
Edge filters, Large Spectral filters, and custom kernel editing			X
Morphological filters		X	X
Fast Fourier Transform (FFT) features		X	X
Pseudo-color tool		X	X
Restricted Dilation feature			X
Image Registration, and spatial and image alignment			X
<b>Count and Size</b>			
Automatic Count and Size tools		X *	X
Measure lengths, roundness, aspects, angles, areas, perimeters, and holes			X
Export measurements to statistical and spreadsheet package via DDE	X	X	X
Display measurements as histograms		X	X
Display measurements as scattergrams			X
Auto Threshold		X	X
Manually tag, count, and classify objects	X	X	X
<b>Measure</b>			
Object tracking tools			X
Calibration tools	X	X	X
Co-localization of probes			X
Pass/Fail routines can be recorded in a macro and played back later			X
Metrology tools measure features such as best-fit line, arc, and circle		X	X
Measure lengths, areas, perimeters, and angles	X	X	X
Auto-Trace feature	X	X	X
Quickly calculate max, min, and average thickness between lines		X	X
Caliper Tool for edge detection and measurement		X	X
<b>Analyze</b>			
Surface Plot displays image intensity values in a 3D Plot			X
Data Collector collects data from multiple images from various tools		X	X
Percent area of multiple threshold levels		X	X
Display data or histograms	X	X	X
Annotation tools	X	X	X
Printing and Publishing features	X	X	X
<b>Auditing and Authentication Features</b>			
Audit Trail			X
Image and File Signature "fingerprint" images for authenticity			X
<b>Image Database</b>			
Seamlessly Export to IQbase™	X	X	X
Organize, store, and retrieve images		X	X
<b>Generate Reports</b>			
Create customized reports with images, data, and text	X	X	X
<b>Add Advanced Microscopy Suite Plug-In Modules</b>			
Extend Image-Pro's functionality with application-specific plug-in modules		X	X
<b>Create Customized Macros (Auto-Pro)</b>			
Macro Programming tools allow you to customize your Image-Pro software			X
<b>Technical Support</b>			
Support from Media Cybernetics	X	X	X

\* Image-Pro Discovery does not contain the full set of count/size tools found in Image-Pro Plus.



**MediaCybernetics®**  
From Images to Answers®

**GT Vision Ltd**  
Hazel Stub Depot,  
Camps Rd, Haverhill,  
Suffolk, CB9 9AF, UK

**Email:** sales@gt-vision.com  
**Web:** www.gt-vision.com

**Europe:** Phone: +44 1440 714737  
Fax: +44 1440 709421

**United Kingdom:** Phone: 01440 714737  
Fax: 01440 709421