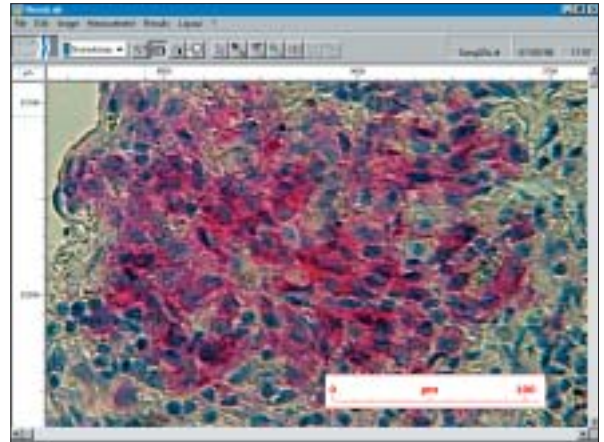
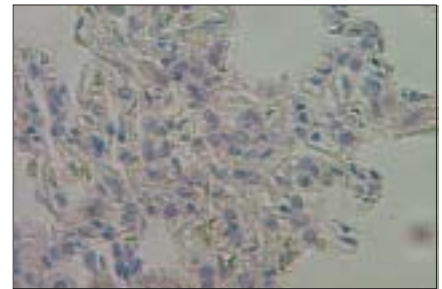
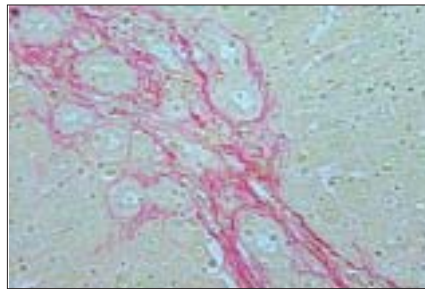
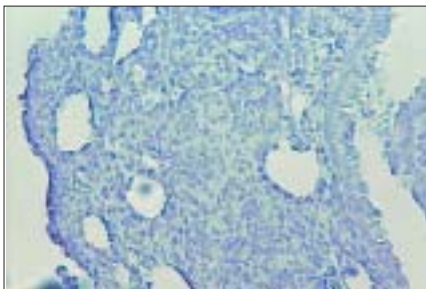


Histolab has been designed to allow you to make a variety of measurements on various types of histological tissue. Histolab is rich in functionality in the areas of processing images and numerous interactive and powerful measurement tools.

We have taken particular care with regards to simplicity and comfort of use for the user, and we wanted the documents produced to be usable straight away : with printing of the images and results and storage in formats that can be manipulated with other applications, statistics on all analyzed structures.



Acquiring the Images



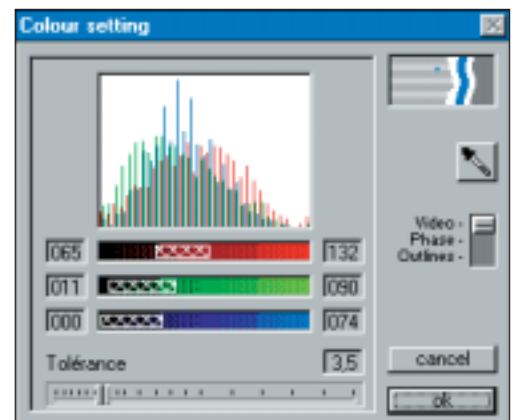
Histolab provides an analysis of all the tissues in a histological section and, for each one of them, an analysis of the cells and/or of subcellular structures visible to a microscope.

Parameters and Processing



Parameters of the study

Histolab provides the user with a whole range of measurement tools, thus adapting to many kinds of biological structures: counting, following cell membranes, modeling nuclei with ellipses, automatic recording of a tissue surface associated with specific staining.



Colour analysis in RGB mode

