

# GX Microscopes

## product datasheet

### GXMPH Series Digital Upright Biological Microscopes

GXMPH100/1300/3100 Series  
Research & Routine

Digital Upright Biological Microscopes

This family of microscopes incorporates the very latest technology live digital imaging systems stylishly incorporated into a modern, high performance microscope.

All of the microscopes have a USB digital image output to a PC running Windows XP (not Vista) where the comprehensive software application displays a live image for image capture, storage, annotation, manipulation and even measurement. PH100\_VU has an additional video output.

Every microscope is supplied complete with a range of accessories which include an aluminium storage case, immersion oil, filters, calibration graticule slide and sample slides.

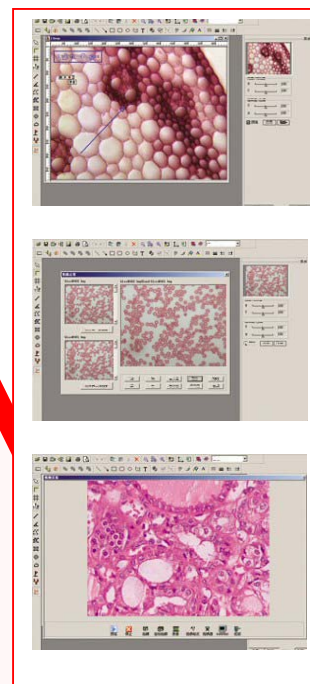
Suitable for almost all level of microscopy users these microscopes are very highly specified with high quality optics including a set of 4 plan achromatic objectives mounted on a reversed nosepiece, koehler illumination, mechanical stage, Abbe condenser and a pair of widefield eyepieces.

See next page for student microscope models



#### Research & Routine Range (see next page for student range)

Specification	Model:	GXMPH100_VU Dual Output Digital & Video	GXMPH1300_U Digital Output	GXMPH3100_U Digital Output
<b>Image Output Resolution</b>		470k	1.3MP	3.1MP
<b>Magnification range</b>		40X-1600X		
<b>Head</b>		Binocular Built-in camera sensor parfocalsed Interpupillary distance adjustment Diopter adjustment 23.2mm ID eyepiece tubes		
<b>Eyepieces</b>	pair	WF10X		
	pair	WF16X		
<b>Objectives</b>	Plan Achromatic	4X, 10X, 40X(s), 100X(s)oil		
<b>Nosepiece</b>	Reversed	Quadruple with ball bearing locator		
<b>Stage</b>	Right side coaxial controls	Double Layer Mechanical Stage 160mm×142mm , 76mm×52mm(travel)		
<b>Focus</b>	Coaxial	Coarse & Fine Focus Knobs		
<b>Condenser</b>	Abbe	N.A.1.25,With Iris Diaphragm and Filter on rack & pinion		
<b>Illumination</b>	Halogen	12V/20W Brightness Adjustable		
<b>Power</b>	Autoswitching	AC100V-AC246V		
<b>Output interfaces</b>	USB-1	✓		
	USB-2		✓	✓
	Video	✓		
<b>Cables Supplied</b>	USB	✓	✓	✓
	Video	✓		
<b>Software</b>		PHMIAS2006		
<b>Options</b>		1. Infinity-Corrected Optical System Infinity-Plan Achromatic Objectives 4X, 10X, 40X(S), 100X(O,S) 2. Plan-Eyepiece : P10X, P16X 3. Plan-Achromatic Objectives : 25X, 63X(S) 4. Dark Field Unit, Phase Contrast Unit , Polarizing Unit , EPI Unit , EPI- Fluorescence Unit , Metallurgical Unit. 6. Micro Image Auto Processing and Analysis Software(Medical Edition)		



# GX Microscopes

## product datasheet



## GXMPH Series Digital Upright Biological Microscopes

### GXMPH50/20 Series For Students

#### Digital Upright Biological Microscopes

These high quality student microscopes incorporate the very latest technology live digital imaging systems stylishly incorporated into a modern, high performance microscope.

Both of the microscopes in this range have a live USB digital image output to a PC.

A comprehensive software application displays on the PC a live image for image capture, storage, annotation, manipulation and even measurement.

Every microscope is supplied complete with a range of accessories which includes sample slides and immersion oil (for 100X objective).

Although they are suitable for almost all level of microscopy user, these microscopes are specifically designed with use in schools and colleges in mind. Each microscope has a specially designed stand so it is easy to carry, it is also relatively lightweight and is of a highly robust, all metal construction.

The microscopes are highly specified with good quality optics including a set of 3 or 4 achromatic objectives mounted on a rotating nosepiece, safe cold LED illumination, a choice of stage types, Abbe condenser on the GXMPH50 model and a widefield eyepiece.

### Student Range

Specification	Model:	GXMPH50DM10 Digital Output	GXMPH20DM5 Digital Output
<b>Image Output Resolution</b>		480k (800x600 pixels)	
<b>Magnification range</b>			40X-400X
<b>Head</b>		Monocular Built-in camera sensor parfocalised 23.2mm ID eyepiece tube	
<b>Eyepiece</b>		WF10X	
<b>Objectives</b>	Achromatic	4X, 10X, 40X(s), 100X(s)oil	4X, 10X, 40X(s)
<b>Nosepiece</b>		Quadruple	Triple
<b>Stage</b>		Double Layer Mechanical Stage 125mmx115mm 70mmx30mm (travel)	Round stage dia.90mm Travel: 6mm slide clips
<b>Focus</b>		Coarse & Fine Focus Knobs Coaxial	Coarse & Fine Focus Knobs Separate
<b>Condenser</b>		N.A.1.25,With Iris Diaphragm on rack & pinion	Single Lens, with Iris Diaphragm
<b>Illumination</b>		White LED, safe low voltage with separate mains transformer	
<b>Power</b>	Autoswitching	AC100V-AC246V	
<b>Image Output</b>	USB-2	✓	✓
<b>Cables Supplied</b>	USB	✓	✓
<b>Software</b>		PHMIAS2006	

Due to our policy of continuous development specifications may change without notice

Jan 09